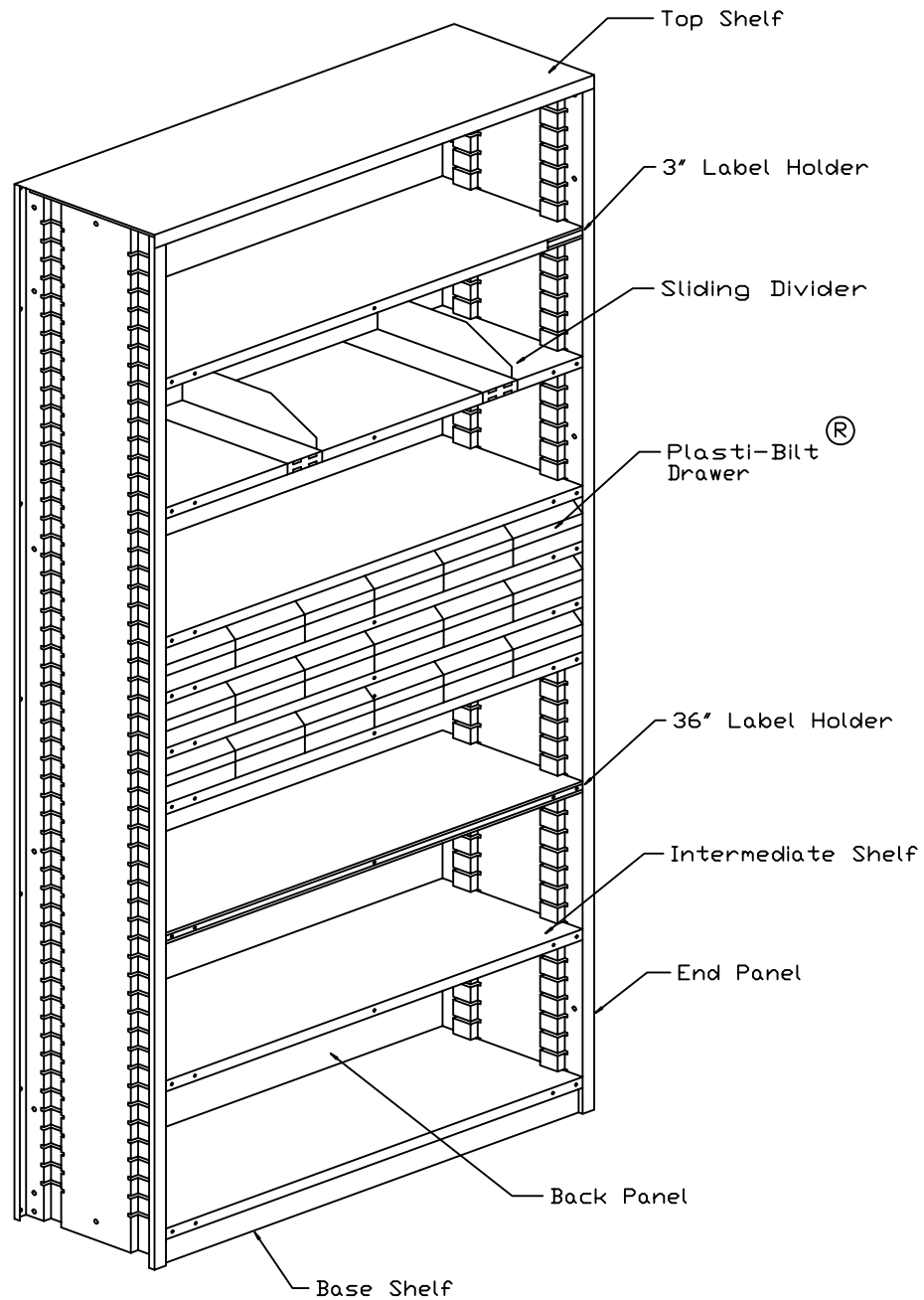


QUICK-BILT[®] ASSEMBLY INSTRUCTIONS

IMPORTANT

CHECK MATERIAL RECEIVED—NUMBER OF PACKAGES AND CONTENTS OF EACH PACKAGE.
PLACE MATERIAL NEAR AREA TO BE INSTALLED.
READ ASSEMBLY INSTRUCTIONS COMPLETELY BEFORE STARTING.



QUICK-BILT®

The basic Quick-Bilt® sliding shelf unit consists of two end panels, one base shelf, one top shelf or mezzanine top, one back panel, and intermediate shelves as desired. Various accessories can be added to the basic unit.

The assembly procedure for Step #1 through Step #3 is easier to accomplish with the unit lying face down on the floor. Figure #1 through Figure #4 are illustrated with the unit in this position.

1. ASSEMBLE BASE SHELF TO END PANELS

Place an end panel on the floor as shown in Figure #1. In this position, the rear face flange (the face flange with holes) is up, the slotted offset flanges are toward the inside of the unit, and the bottom of the end panel (the end with two holes spaced 1" apart on the sides near the offset flanges) is positioned as shown.

Position the base shelf as shown in Figure #1. Slide the top surface of the shelf into the bottom set of slots in the offset flanges. Bolt the base shelf to the end panel three places with 1/4" x 1/2" bolts and nuts. Finger tighten only. Repeat the procedure for the other end of the base shelf by bolting to the bottom of another end panel.

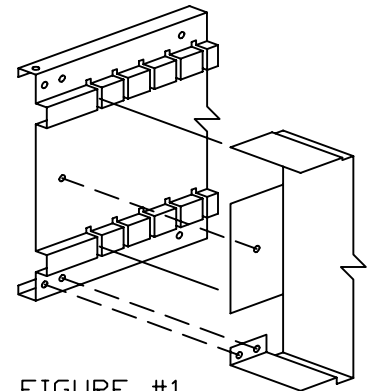


FIGURE #1

2. ASSEMBLE TOP SHELF TO END PANELS

Follow Step #2A for standard top shelves (non-mezzanine applications). Follow Step #2B for mezzanine tops (mezzanine applications).

A. STANDARD TOP SHELVES - Orient the top shelf as shown in Figure #2 (the face flange with the F-G logo down). Place the top shelf on the end panel with the front and rear flanges on the outside of the end panel face flanges and the attaching tabs on the outside of the end panel. Bolt the top shelf to the end panel two places with 1/4" x 1/2" bolts and nuts. Finger tighten only. Repeat the procedure for the other end of the top shelf by bolting to the top of the other end panel.

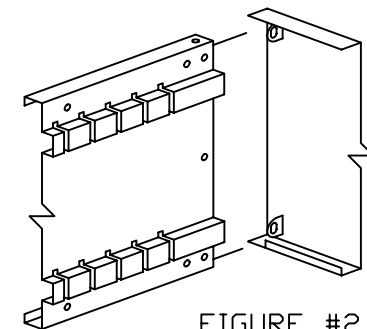


FIGURE #2

B. MEZZANINE TOPS- Mezzanine tops can be attached to the upper or lower set of holes in the end panel. The lower set produces even foot heights (7' or 8'). The upper set increases the height by 1" (7'-1" or 8'-1"). Orient the mezzanine top as shown in Figure #3 (the face flange with the F-G logo down). Place the mezzanine top on the end panel with the front and rear flanges on the outside of the end panel face flanges and the attaching angle on the outside of the end panel. Bolt the mezzanine top to the end panel two places with 1/4" x 1/2" bolts and nuts. Finger tighten only. Repeat the procedure for the other end of the mezzanine top by bolting to the top of the other end panel.

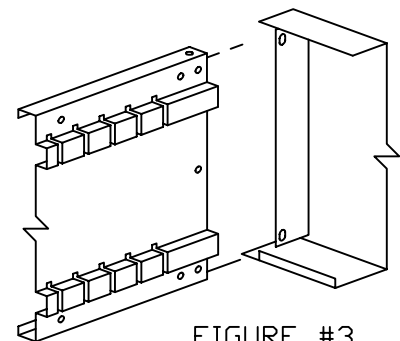


FIGURE #3

QUICK-BILT[®]

3. ATTACH BACK PANEL

For individual or single row units, follow Step #3A. For double row units, follow Step #3B.

A. FOR INDIVIDUAL OR SINGLE ROW UNITS Place the back panel on top of the end panels, base shelf, and top shelf with the bottom edge at the bottom of the end panel as shown in Figure #4. The bottom of the back panel is the edge with two holes located 1" from the edge. Bolt the back panel to both end panels and the base shelf with 1/4" x 1/2" bolts and nuts. Finger tighten only. Stand the unit upright and bolt the back panel to the top shelf two places with 1/4" x 1/2" bolts and nuts. Finger tighten only.

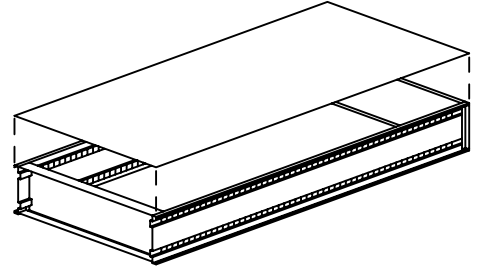


FIGURE #4

B. FOR DOUBLE ROW UNITS- Construct two units following Steps #1 and #2. Stand the units upright and position them back-to-back. Place a back panel between the units with the bottom toward the floor. The bottom of the back panel is the edge with two holes located 1" from the edge. Attach the back panel by bolting through both end panels and the back panel with 1/4" x 1/2" bolts and nuts. Finger tighten only. Bolting the panel to the base shelf or the top shelf is not required for double row units.

4. PLUMB UNIT AND TIGHTEN BOLTS AND NUTS

Install some intermediate shelves in the unit at the desired locations. With the front flange of the shelf (the flange with five holes) toward the front of the unit, slide the edges of the shelf into the slots in the offset flanges of the end panels until the lances in the top of the shelf engage the offset flanges (see Figure #5). With the unit plumb and level, tighten all bolts and nuts. To remove a shelf, raise the front up and slide the shelf out of the unit. Repeat Step #1 through Step #4 until all units are complete.

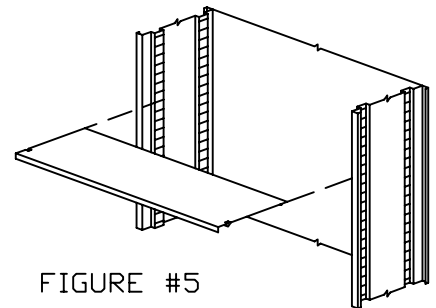


FIGURE #5

5. COMPLETE THE ASSEMBLY

Install the remaining intermediate shelves at the desired locations using the same procedure as described in Step #4.

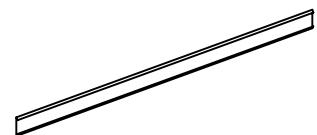
For single row and double row units, bolt the end panels of adjoining units together through the holes in the side of the end panels near the front slotted offset flanges with 1/4" x 2-1/2" bolts and nuts. Bolt two places for non-mezzanine applications and four places for mezzanine applications.

Install accessories as required.

ACCESSORIES

36" LABEL HOLDER

Align the holes in the label holder with the holes in the face of the intermediate shelf or base shelf. Attach the label holder to the shelf three places (for intermediate shelves) or two places (for base shelves) with plastic push-in fasteners.

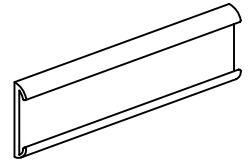


QUICK-BILT®

ACCESSORIES (CONT'D.)

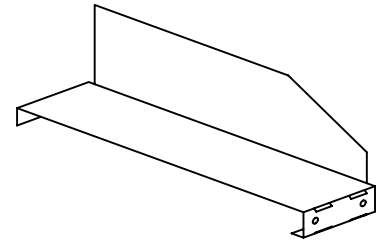
3" LABEL HOLDER

The 3" Label Holder is magnetic and can be positioned at any desired location on the shelves.



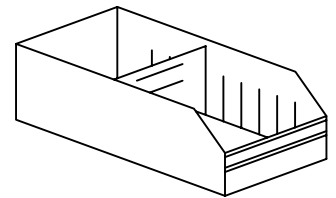
SLIDING DIVIDER

Snaps over the front of intermediate shelves or base shelves. The rear flange fits over the rear flange of the shelf to retain the divider in place. Divider slides along shelf to provide adjustable compartments. Cannot be used in conjunction with 36" label holders.



12" DEEP PLASTI-BILT DRAWER

Rests on intermediate or base shelves for storage of small parts. Dividers fit into ribs located on the side of the drawer. When shelves are spaced 4-1/2" apart, the raised back on the drawer serves as a stop to retain the drawer on the shelf while it is pulled out. The drawer front and dividers are molded with integral label holders.



END PANEL STIFFENERS

Quick-Bilt mezzanine applications require end panel stiffeners at the front of each end panel on each row end unit. Insert the end panel stiffener inside the front flange of each end panel at each row end as shown in Figure #9. Bolt the end panel stiffener to the end panel seven places with 1/4" x 1/2" bolts and nuts. The top and bottom bolts are common to the top shelf and base shelf. Tighten all bolts and nuts.

